

Hardi 110 Nozzles



Flat Fan Nozzle ISO F-series SYNTAL

Part Number	Description	List Price
HA371963	ISO F-0075-110 pink SYNTAL	\$5.15
HA371706	ISO F-01-110 orange SYNTAL	\$5.15
HA371707	ISO F-015-110 green SYNTAL	\$5.15
HA371708	ISO F-02-110 yellow SYNTAL	\$5.15
HA371946	ISO F-025-110 lilac SYNTAL	\$5.15
HA371709	ISO F-03-110 blue SYNTAL	\$5.15
HA371710	ISO F-04-110 red SYNTAL	\$5.15
HA371711	ISO F-05-110 brown SYNTAL	\$5.15
HA371712	ISO F-06-110 grey SYNTAL	\$5.15
HA371713	ISO F-08-110 white SYNTAL	\$5.15
HA371966	ISO F-10-110 light blue SYNTAL	\$5.15



Flat Fan Nozzle ISO F-series CERAMIC

Part Number	Description	List Price
371738	ISO F-015-110 green CERAMIC	\$9.50
371739	ISO F-02-110 yellow CERAMIC	\$9.50
371740	ISO F-03-110 blue CERAMIC	\$9.50
371741	ISO F-04-110 red CERAMIC	\$9.50
371742	ISO F-05-110 brown CERAMIC	\$9.50
371743	ISO F-06-110 grey CERAMIC	\$9.50



Flat Fan Nozzle ISO F COLOR TIPS SYNTAL

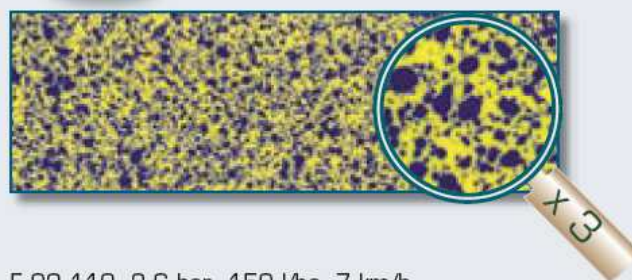
Part Number	Description	List Price
HA371964	ISO F-0075-110 COLOR TIP pink SYNTAL	\$6.60
HA371764	ISO F-01-110 COLOR TIP orange SYNTAL	\$6.60
HA371765	ISO F-015-110 COLOR TIP green SYNTAL	\$6.60
HA371766	ISO F-02-110 COLOR TIP yellow SYNTAL	\$6.60
HA371950	ISO F-025-110 COLOR TIP lilac SYNTAL	\$6.60
HA371767	ISO F-03-110 COLOR TIP blue SYNTAL	\$6.60
HA371768	ISO F-04-110 COLOR TIP red SYNTAL	\$6.60
HA371769	ISO F-05-110 COLOR TIP brown SYNTAL	\$6.60
HA371770	ISO F-06-110 COLOR TIP grey SYNTAL	\$6.60
HA371771	ISO F-08-110 COLOR TIP white SYNTAL	\$6.60
HA371970	ISO F-10-110 COLOR TIP light blue SYNTAL	\$6.60



Flat Fan nozzle ISO F COLOR TIPS CERAMIC

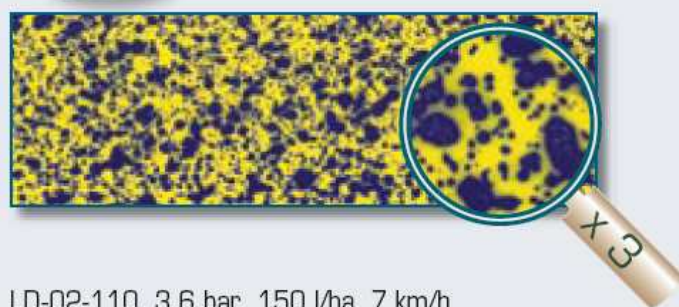
Part Number	Description	List Price
HA371772	ISO F-015-110 COLOR TIP green CERAMIC	\$11.00
HA371773	ISO F-02-110 COLOR TIP yellow CERAMIC	\$11.00
HA371774	ISO F-03-110 COLOR TIP blue CERAMIC	\$11.00
HA371775	ISO F-04-110 COLOR TIP red CERAMIC	\$11.00
HA371776	ISO F-05-110 COLOR TIP brown CERAMIC	\$11.00
HA371777	ISO F-06-110 COLOR TIP grey CERAMIC	\$11.00

HARDI Flat fan nozzles



F-02-110 3.6 bar 150 l/ha 7 km/h

HARDI LD LowDrift nozzles



LD-02-110 3.6 bar 150 l/ha 7 km/h

Hardi LowDrift Nozzles

LowDrift Nozzle ISO LD-series SYNTAL



Part Number	Description	List Price
HA371817	ISO LD-01-110 orange SYNTAL	\$10.40
HA371818	ISO LD-015-110 green SYNTAL	\$10.40
HA371819	ISO LD-02-110 yellow SYNTAL	\$10.40
HA371957	ISO LD-025-110 lilac SYNTAL	\$10.40
HA371820	ISO LD-03-110 blue SYNTAL	\$10.40
HA371821	ISO LD-04-110 red SYNTAL	\$10.40
HA371893	ISO LD-05-110 brown SYNTAL	\$10.40

LowDrift Nozzle ISO LD COLOR TIPS SYNTAL



Part Number	Description	List Price
HA371837	ISO LD-01-110 COLOR TIP orange SYNTAL	\$11.75
HA371838	ISO LD-015-110 COLOR TIP green SYNTAL	\$11.75
HA371839	ISO LD-02-110 COLOR TIP yellow SYNTAL	\$11.75
HA371958	ISO LD-025-110 COLOR TIP lilac SYNTAL	\$11.75
HA371840	ISO LD-03-110 COLOR TIP blue SYNTAL	\$11.75
HA371841	ISO LD-04-110 COLOR TIP red SYNTAL	\$11.75
HA371894	ISO LD-05-110 COLOR TIP brown SYNTAL	\$11.75

Hardi MINIDrift Nozzles

MINIDrift Nozzle ISO SYNTAL

Part Number	Description	List Price
HA372111	ISO MD-015-110 green SYNTAL	\$13.25
HA372112	ISO MD-02-110 yellow SYNTAL	\$13.25
HA372113	ISO MD-025-110 lilac SYNTAL	\$13.25
HA372114	ISO MD-03-110 blue SYNTAL	\$13.25
HA372115	ISO MD-04-110 red SYNTAL	\$13.25
HA372116	ISO LD-05-110 brown SYNTAL	\$13.25

MINIDrift Nozzle ISO COLOR TIPS SYNTAL

Part Number	Description	List Price
HA372121	ISO MD-015-110 COLOR TIP green SYNTAL	\$14.40
HA372122	ISO MD-02-110 COLOR TIP yellow SYNTAL	\$14.40
HA372123	ISO MD-025-110 COLOR TIP lilac SYNTAL	\$14.40
HA372124	ISO MD-03-110 COLOR TIP blue SYNTAL	\$14.40
HA372125	ISO MD-04-110 COLOR TIP red SYNTAL	\$14.40
HA372126	ISO MD-05-110 COLOR TIP brown SYNTAL	\$14.40

Air Inclusion Nozzles

INJET Nozzle SYNTAL

Part Number	Description	List Price
HA371926	HARDI INJET 01 orange SYNTAL*	\$17.25
HA371872	HARDI INJET 015 green SYNTAL*	\$17.25
HA371873	HARDI INJET 02 yellow SYNTAL*	\$17.25
HA371874	HARDI INJET 025 lilac SYNTAL*	\$17.25
HA371875	HARDI INJET 03 blue SYNTAL*	\$17.25
HA371876	HARDI INJET 04 red SYNTAL*	\$17.25
HA371927	HARDI INJET 05 brown SYNTAL*	\$17.25
HA371928	HARDI INJET 06 grey SYNTAL*	\$17.25
HA371929	HARDI INJET 08 white SYNTAL*	\$17.25

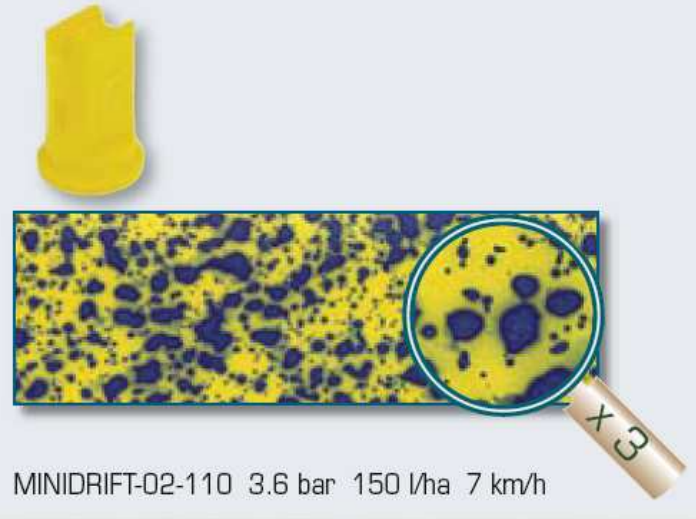
*The HARDI INJET series is mounted with the 334083 universal cap

B-JET Nozzle SYNTAL (Buffer-jet, edge nozzle)

Part Number	Description	List Price
HA371930	HARDI B-JET 02 yellow SYNTAL*	\$26.35
HA371877	HARDI B-JET 025 lilac SYNTAL*	\$26.35
HA371870	HARDI B-JET 03 blue SYNTAL*	\$26.35
HA371871	HARDI B-JET 04 red SYNTAL*	\$26.35

*The HARDI INJET series is mounted with the 334083 universal cap

HARDI MINIDRIFT nozzles



MINIDRIFT-02-110 3.6 bar 150 l/ha 7 km/h

HARDI INJET nozzles



INJET-02-110 3.6 bar 150 l/ha 7 km/h

Calibration formulas

$$\text{Speed check} \quad \frac{\text{Distance (m)} \times 3.6}{\text{Time (s)}} = \text{km/h}$$

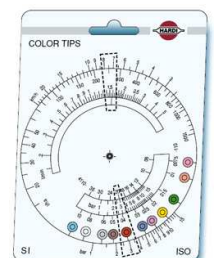
$$\text{Application volume} \quad \frac{600 \times \text{l/min (per nozzle)}}{\text{Nozzle spacing (m)} \times \text{km/h}} = \text{l/ha}$$

$$\text{Nozzle output} \quad \frac{\text{Nozzle spacing (m)} \times \text{l/ha} \times \text{km/h}}{600} = \text{l/min (per nozzle)}$$

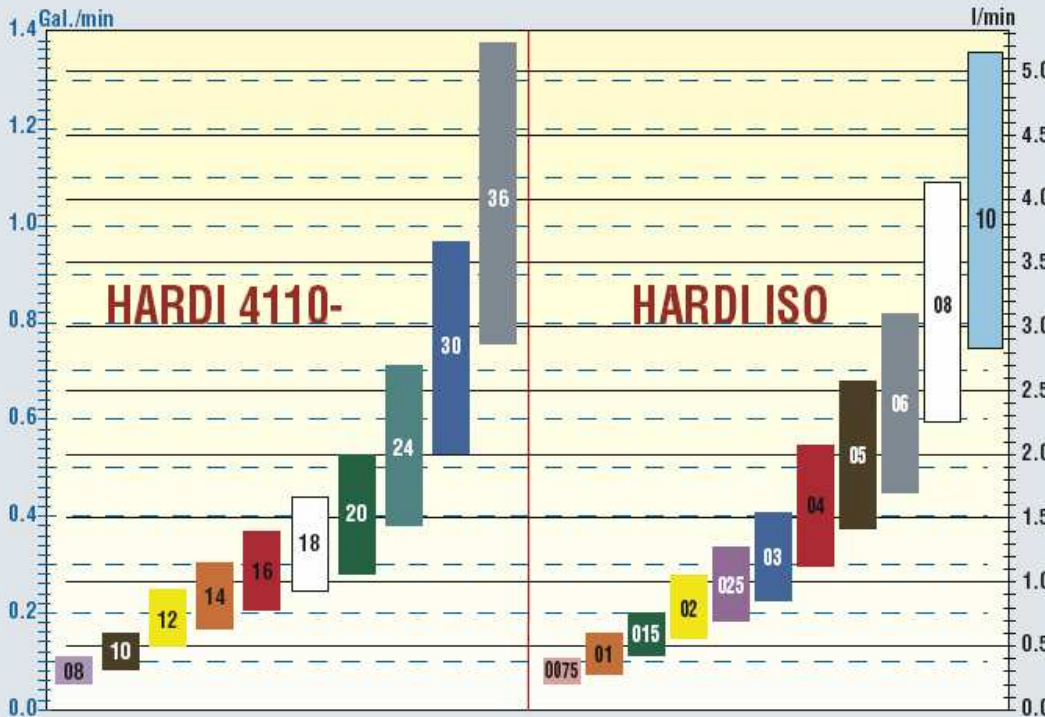
$$\text{Pressure adjustment} \quad \left(\frac{\text{New output (l/min)}}{\text{Known output (l/min)}} \right)^2 \times \text{Known pressure (bar)} = \text{New pressure (bar)}$$

For easy selection of nozzles and pressure, use the HARDI calibration disk (order no. 285802 \$29.50)

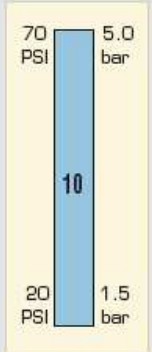
Part Number	Type	Price
HA334083	ISO-Injet Cap (Hardi Snapfit)	4.10
HA334082	Cone Nozzle Cap (Hardi Snapfit)	4.10
HA334862	ISO-Injet Cap (TeeJet Snapfit)	4.10



Conversion table for HARDI 4110 and HARDI ISO nozzles



Flows at pressure from 1.5 to 5 bar (20 to 70 PSI)



You can use these figures to check which HARDI ISO nozzles that may replace your 4110 nozzles.

Spray quality and capacity for HARDI ISO 110° flat fan nozzles

HARDI ISO F-110 Standard flat fan nozzles							HARDI ISO LD-110 LowDrift nozzles							HARDI ISO MINIDRIFT Air inclusion nozzles							HARDI ISO INJET Air inclusion nozzles																	
ISO size/colour	bar 1.5	2.0	2.5	3.0	4.0	5.0	ISO size/colour	bar 1.5	2.0	2.5	3.0	4.0	5.0	ISO size/colour	bar 1.5	2.0	2.5	3.0	4.0	5.0	ISO size/colour	bar 3.0	4.0	5.0	6.0	7.0	8.0											
0075-Pink	0.21	0.24	0.27	0.30	0.35	0.39	01-Orange	0.28	0.33	0.37	0.40	0.46	0.52	015-Green	0.42	0.49	0.55	0.60	0.69	0.77	02-Yellow	0.57	0.65	0.73	0.80	0.92	1.03											
01-Orange	0.28	0.33	0.37	0.40	0.46	0.52	015-Green	0.42	0.49	0.55	0.60	0.69	0.77	025-Lilac	0.71	0.82	0.91	1.00	1.15	1.29	03-Blue	0.85	0.98	1.10	1.20	1.39	1.55											
015-Green	0.42	0.49	0.55	0.60	0.69	0.77	02-Yellow	0.57	0.65	0.73	0.80	0.92	1.03	03-Blue	0.85	0.98	1.10	1.20	1.39	1.55	04-Red	1.13	1.31	1.46	1.60	1.85	2.07											
02-Yellow	0.57	0.65	0.73	0.80	0.92	1.03	025-Lilac	0.71	0.82	0.91	1.00	1.15	1.29	04-Red	1.13	1.31	1.46	1.60	1.85	2.07	05-Brown	1.41	1.63	1.83	2.00	2.31	2.58											
025-Lilac	0.71	0.82	0.91	1.00	1.15	1.29	03-Blue	0.85	0.98	1.10	1.20	1.39	1.55	05-Brown	1.41	1.63	1.83	2.00	2.31	2.58	06-Grey	1.70	1.96	2.19	2.40	2.77	3.10											
03-Blue	0.85	0.98	1.10	1.20	1.39	1.55	04-Red	1.13	1.31	1.46	1.60	1.85	2.07	06-Grey	1.70	1.96	2.19	2.40	2.77	3.10	08-White	2.26	2.61	2.92	3.20	3.70	4.13											
04-Red	1.13	1.31	1.46	1.60	1.85	2.07	05-Brown	1.41	1.63	1.83	2.00	2.31	2.58	08-White	2.26	2.61	2.92	3.20	3.70	4.13	10-Light blue	2.83	3.27	3.65	4.00	4.62	5.16											
05-Brown	1.41	1.63	1.83	2.00	2.31	2.58	<p>Spray quality:</p> <table border="0"> <tr> <td>Fine</td> <td>Coarse</td> </tr> <tr> <td>Medium</td> <td>Verry coarse</td> </tr> </table>																												Fine	Coarse	Medium	Verry coarse
Fine	Coarse																																					
Medium	Verry coarse																																					

Solid Stream & Cone Nozzles

1098 Solid Stream series CERAMIC

15mm disc

Part Number	Description	List Price
HA371309	1099-08 CERAMIC	\$11.00
HA371310	1099-10 CERAMIC	\$11.00
HA371311	1099-12 CERAMIC	\$11.00
HA371312	1099-15 CERAMIC	\$11.00
HA371313	1099-18 CERAMIC	\$11.00
HA371314	1099-20 CERAMIC	\$11.00
HA371315	1099-23 CERAMIC	\$11.00
HA371884	1099-30 CERAMIC	\$11.00



GeoLine Solid Stream Nozzles

18mm Ceramic disc

Part Number	Hole mm	List Price
GEO8259059	0.8	\$11.25
GEO8259060	1.0	\$11.25
GEO8259061	1.2	\$11.25
GEO8259062	1.5	\$11.25
GEO8259063	1.8	\$11.25
GEO8259064	2.0	\$11.15
GEO8259065	2.3	\$11.25



1298 Hollow Cone Nozzle series CERAMIC

Part Number	Description	List Price
HA371507	1299-06 white CERAMIC	\$15.50
HA371508	1299-08 lilac CERAMIC	\$15.50
HA371509	1299-10 brown CERAMIC	\$15.50
HA371510	1299-12 yellow CERAMIC	\$15.50
HA371511	1299-14 orange CERAMIC	\$15.50
HA371512	1299-16 red CERAMIC	\$15.50
HA371972	1299-17 grey CERAMIC	\$15.50
HA371513	1299-18 green CERAMIC	\$15.50
HA371973	1299-19 black CERAMIC	\$15.50
HA371514	1299-20 blue CERAMIC	\$15.50



Ceramic Cone Tip

Part Number	Hole mm	List Price
B68.1802.49	1.0	\$13.75
B68.1802.50	1.2	\$13.75
B68.1802.51	1.5	\$13.75
B68.1802.52	1.8	\$13.75
B68.1802.53	2.0	\$13.75
B68.1802.54	2.3	\$13.75
B68.1802.16	2.5	\$13.75
B68.1802.17	3.0	\$13.75
B68.1802.18	3.,5	\$13.75



Nozzles For Vine Booms



Part Number	Description	List Price
B9.1305.8	Protection	\$6.00
B9.601.29	Gasket	\$0.75

Part Number	Hole mm	Description	List Price
B9.1312.2	1.0	Nozzle, Protection and Gasket	\$9.00
B9.1312.3	1.2	Nozzle, Protection and Gasket	\$9.00
B9.1312.1	1.5	Nozzle, Protection and Gasket	\$9.00
B9.1312.4	1.8	Nozzle, Protection and Gasket	\$9.00
B9.1312.5	2.0	Nozzle, Protection and Gasket	\$9.00
B9.1312.6	2.3	Nozzle, Protection and Gasket	\$9.00

Part Number	Hole mm	Description	List Price
B9.801.12	1.0	Nozzle Only	\$4.50
B9.801.13	1.2	Nozzle Only	\$4.50
B9.801.14	1.5	Nozzle Only	\$4.50
B9.801.15	1.8	Nozzle Only	\$4.50
B9.801.16	2.0	Nozzle Only	\$4.50
B9.801.17	2.3	Nozzle Only	\$4.50

Off Centre Nozzles

Off Centre Nozzle

1850-series

Part Number	Description	List Price
HA370366	G 150 SYNTAL 3/8"	\$15.00
HA370377	G 200 SYNTAL 3/8"	\$15.00
HA370381	G 250 SYNTAL 3/8"	\$15.00
HA370392	G 300 SYNTAL 3/8"	\$15.00
HA370403	G 350 SYNTAL 3/8"	\$15.00
HA370414	G 400 SYNTAL 3/8"	\$15.00
HA730076	Mounting kit for the 1850-series	
HA 5908200	End Nozzle Kit with Tap and G150	\$89.00



Off Centre Nozzle

1740-series SYNTAL

Part Number	Description	List Price
HA370425	G 500 SYNTAL 1/2"	\$26.00
HA370436	G 600 SYNTAL 1/2"	\$26.00
HA370447	G 700 SYNTAL 1/2"	\$26.00
HA370451	G 800 SYNTAL 1/2"	\$26.00
HA72023300	Mounting kit for the 1740-series	



Giant End Nozzle series SYNTAL

Part Number	Description	List Price
HA371556	G 1000 red SYNTAL	\$47.50
HA371557	G 1200 white SYNTAL	\$47.50
HA371558	G 1600 blue SYNTAL	\$47.50



4 Princes St **Ph 09 634 4632**
Onehunga **Fax 09 634 4238**
Auckland **Email Sales@Hardi.co.nz**

All Prices are plus GST and Freight
 Prices shown are current at time of publication and may be subject to change